

CAGE-BED

THE AUTHENTIC FREEDOM

TEAM 5

Marcus & Xiaowen

WHAT IS FREEDOM?

- Is it the absence of PHYSICAL restraint?
 - Does being in closed confines necessarily mean being trapped?
 - Does being in an open space necessarily mean freedom?
- Is it the absence of PSYCHOLOGICAL restraint?
 - Being with loved ones, but feeling suffocated?
 - Being alone, but having full control of self?
- Is it AGENCY?
 - Social science concept of people's power and capacity to fulfil their potential (i.e. do what they want to do)
 - When do humans start feeling or having agency?
 - Are we living in a world where we have less agency?
 - Will we live in a future where there is no more freedom?

CAN WE CONTROL HOW FREE WE FEEL?

- Self-regulation of emotions?
- Developing psychological resilience?
- When do these begin to form in childhood?

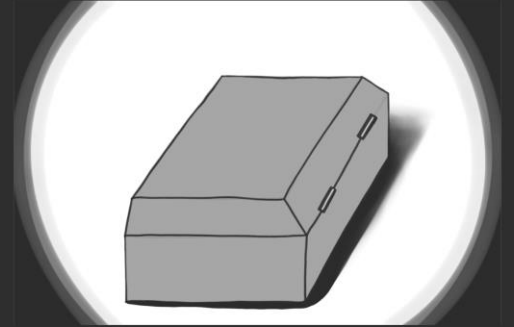
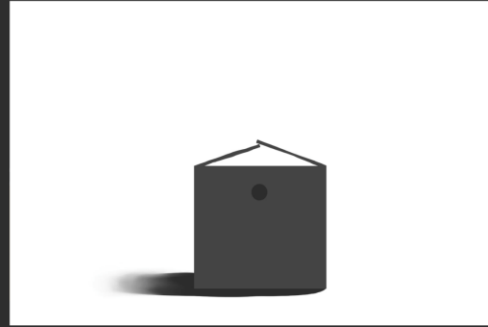
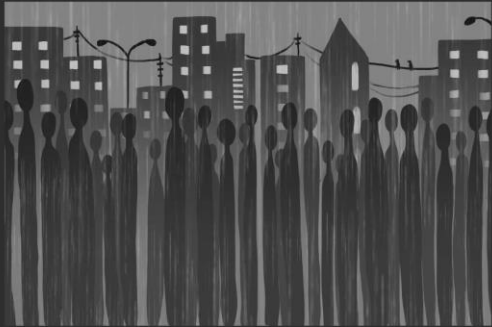
- Can we **protect children** from their **family**/culture, etc.?
- Can we **protect children** from the **cage**/ jail/ mental hospital etc. that they can't run away from?

... before they get “forced treatment” to become “good kids”...

... before they grow up and are trapped in ways defined by others...

... before they lose the chance to develop strong psychological resilience and self-regulation...

CONCEPTUAL DESIGN



- To tell a story of loneliness, depression and self-regulation.



FUNCTIONAL DESIGN

- Furniture and device designed for children / adolescents
 - Normal rest (like any other bed)
 - Safe space to self-regulate
 - Developmental apparatus for psych resilience
- Reacts to environmental stress factors, e.g.:
 - Climate: Cold / Hot / Humid / Dry, etc.
 - Ambience: Loud / Quiet / Bright / Dry, etc.
- Reacts to the user's internal states, e.g.:
 - Psychological: Brainwaves relating to high stress
 - Physiological: Biochemicals relating to stress / panic, body temperature, heartbeat, etc.

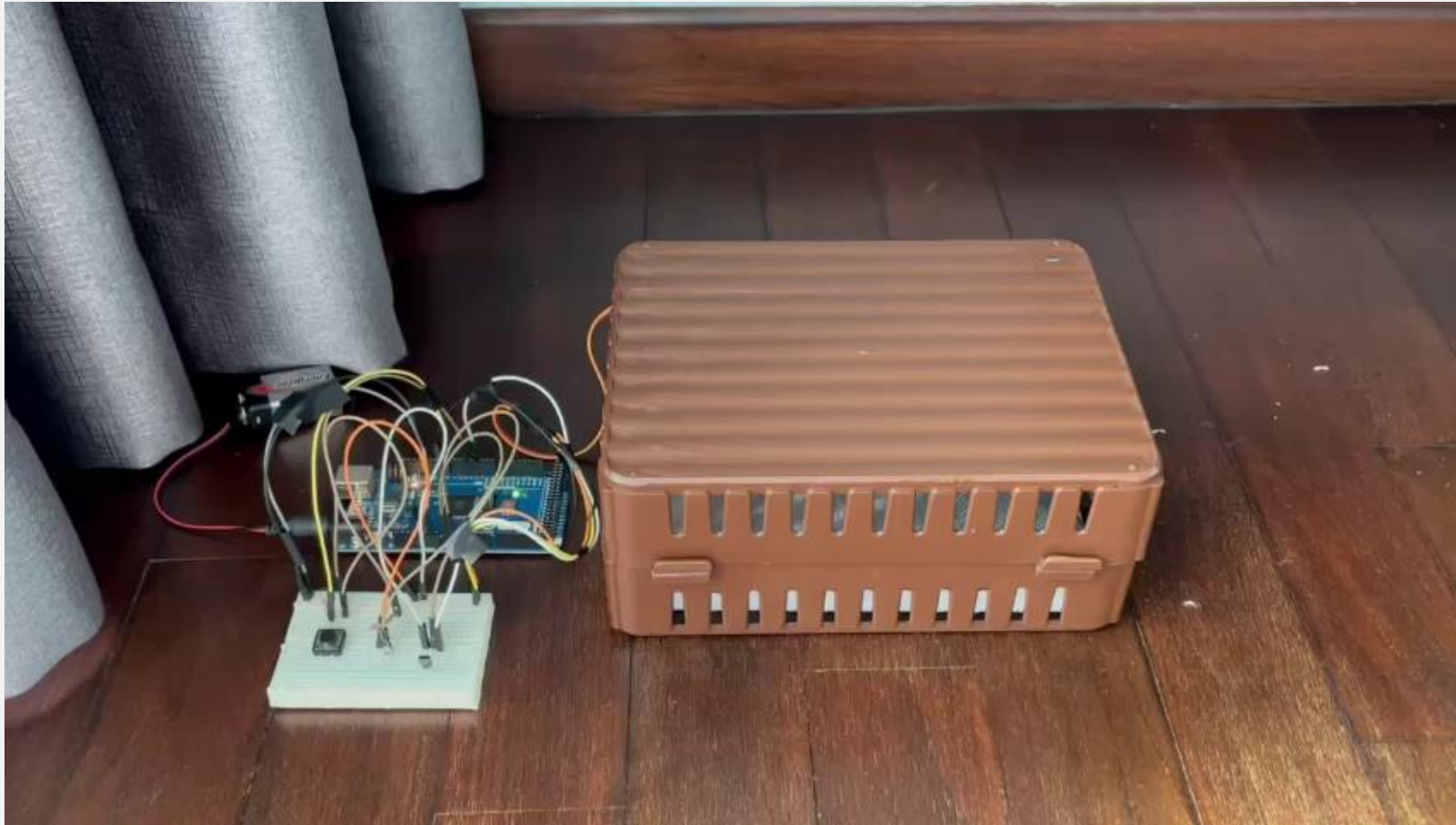
IMPLEMENTATION

- A scale model
- Environmental Stress Factor: Light / Dark
 - A LIGHT SENSOR
 - Cage only opens if it is dark enough (by turning off the light etc.)
 - Disabled if the cage-bed is in use (button press)
- Internal States: Hot / Cold
 - A TEMPERATURE SENSOR
 - Activates when user 'starts' the machine (button press)
 - Cage only opens if the user's body temperature is high enough

PROTOTYPE



DEMO VIDEO



CULTURAL PROBES



“I wonder if sleeping in it has the same effects as sleeping on the beds (also called "coffins") on ships. Where at first you'll feel completely restricted but eventually you come to enjoy the sense of the rest of the world being blocked out, time feels paused.”

DIVERGENT THINKING...

As you interact with the prototype...

- Immerse yourself in a future world where freedom is a premium
- Imagine how technology could help you regulate your emotions
- Introspect how you, as a child, might have benefitted from early use of the cage-bed
- Investigate how, as a child, usage of the cage bed might go wrong

THANK YOU